

METER BOXES

BY TRICEL

40+ YEARS
TECHNICAL
EXPERIENCE



METER BOX REPLACEMENT LATCH

STOCK CODE: EK0006

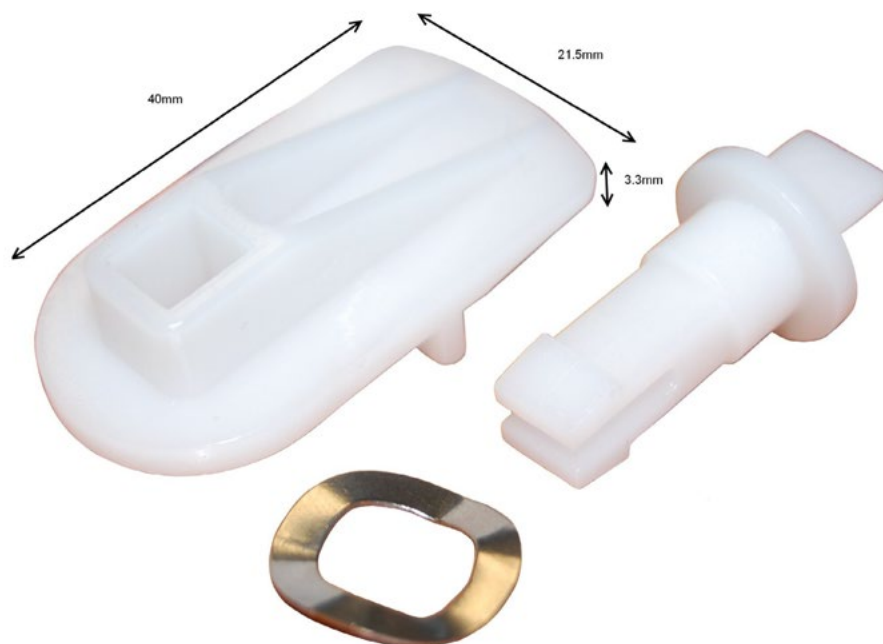

TRICEL
GENERATIONS OF INNOVATION

STOCK CODE:
EK0006

METER BOX REPLACEMENT LATCH

**METER
BOXES**
BY TRICEL

40+ YEARS
TECHNICAL
EXPERIENCE



Replacement latch - Suitable for most gas and electric meter boxes.

INSTALLATION

1. Remove the old lock from the door.
2. Place the latch (40x21.5mm) section on the inside of the door.
3. From the outside of the door insert the wavy washer.
4. Insert the latch post clicking it into place.

* Approximate dimensions.

In accordance with Tricel's normal policy of product development these specifications are subject to change without notice.

TRICEL UK

Tel: +44 (0)1453 791616

Registered number 02868648

TRICEL IRL

Tel: +353 (0)64 663 2421

Registered number IE 075014