

METER BOXES

BY TRICEL



UK'S LEADING
DESIGNER & MANUFACTURER



GRP Overbox Electric Recessed Mark 2

GRP architrave overbox to suit damaged recessed meter boxes. This GRP Overbox (Door frame kit) comes with a tapered back to fit standard UK electricity meter boxes..

COMPLIANT TO BS 8567 : 2012

STOCK CODE: 106547



TRICEL
GENERATIONS OF INNOVATION

GRP OVERBOX ELECTRIC

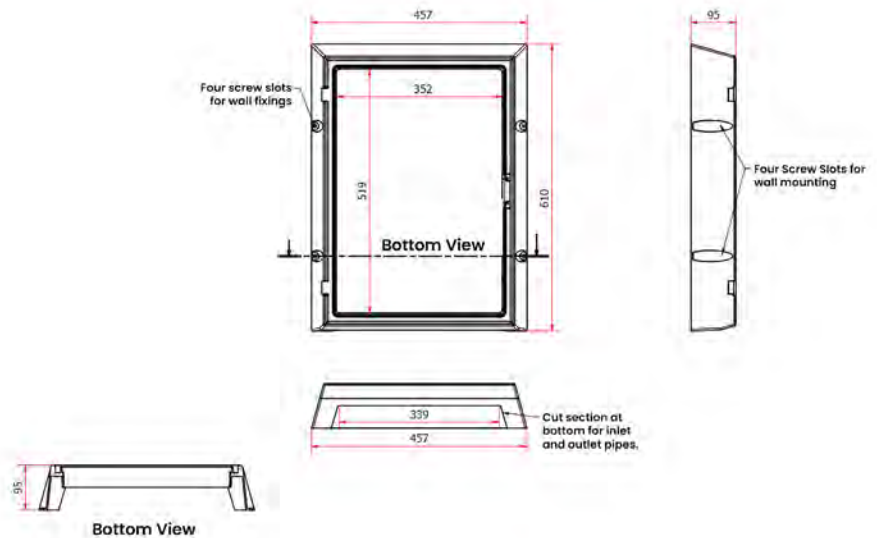
GRP architrave overbox to suit damaged recessed meter boxes.

METER BOXES

BY TRICEL



UK'S LEADING
DESIGNER & MANUFACTURER



DIMENSIONS

610mm high x 457mm wide x 95mm deep.

Internal dimensions = 519mm high x 352mm wide*

SPECIFICATION & KEY FEATURES

- GRP overbox, repair solution for damaged Electric recessed meter boxes.
- Meets the requirements of British Standard BS8567 : 2012.
- Works with Smart Meters (no interference).
- Constructed from SMC / GRP – Glass Reinforced Polymer.
- Will not corrode, weather resistant.
- Easily cleaned and can be painted.
- Hinges on right.
- Suitable for buildings with red bricks.



TRICEL
GENERATIONS OF INNOVATION

* Approximate dimensions.

In accordance with Tricel's normal policy of product development these specifications are subject to change without notice.

Tricel (Gloucester) Ltd. - Fox House, Stonedale Road, Stonehouse, Gloucestershire, GL10 3SA, United Kingdom.

Tel: +44 1453 791616 | Email: constructionsales@tricel.co.uk | www.tricel.co.uk

GRP OVERBOX ELECTRIC

GRP architrave overbox to suit damaged recessed meter boxes.

METER BOXES

BY TRICEL

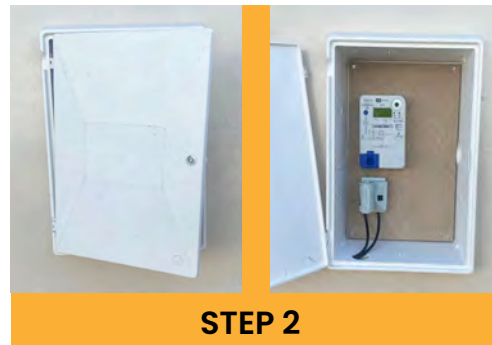


UK'S LEADING
DESIGNER & MANUFACTURER

Step 1: Ensure that the GRP Overbox that you want to fit is the correct one for the box on the wall.

The existing box on the wall should be approximately:

- Height = 595mm to 600mm
- Width = 410mm to 412mm
- Depth (outside of box to wall) = 70mm to 75mm



STEP 2

Step 2: Remove the existing door, clean the box architrave and inspect for damage. Any damage (holes or cracks) should be filled using a 4-hour fire-retardant silicone to ensure that water doesn't enter the cabinet.

Step 3: After unpacking the new GRP Overbox, remove the door from the damaged meter box. This can be done by depressing the brass insert hinge with a narrow screwdriver.



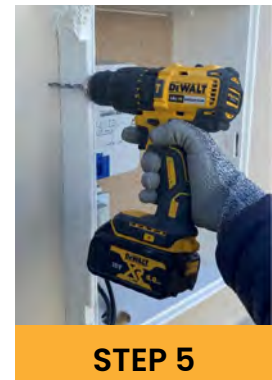
STEP 4

Step 4: On the wall, position the GRP Overbox over the damaged box. Make sure the box fits properly (incorrect wall installation may hinder this).



STEP 5

Step 5: Mark the holes on the wall from the Overbox fitting holes:



STEP 5

Step 6: Drill holes using M6 Drill bit at a depth of 30mm



* Approximate dimensions.

In accordance with Tricel's normal policy of product development these specifications are subject to change without notice.

Tricel (Gloucester) Ltd. - Fox House, Stonedale Road, Stonehouse, Gloucestershire, GL10 3SA, United Kingdom.

Tel: +44 1453 791616 | Email: constructionsales@tricel.co.uk | www.tricel.co.uk

GRP OVERBOX ELECTRIC

GRP architrave overbox to suit damaged recessed meter boxes.

METER BOXES

BY TRICEL



UK'S LEADING
DESIGNER & MANUFACTURER



STEP 7

Step 7: Drill holes using M6 Drill bit at a depth of 30mm



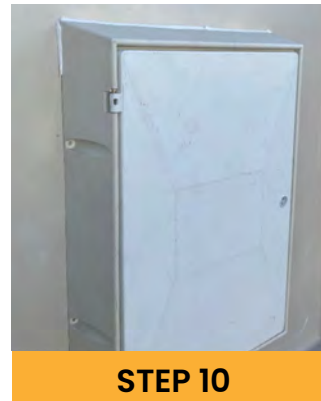
STEP 8

Step 8: Align the Overbox to the holes drilled on wall, and fix to the wall using supplied M5x30mm screws.



STEP 9

Step 9: Close the door and test the fit.



STEP 10

Step 10: You may need to seal the architrave to the wall to fill in gaps, we only recommend FR200 four hour fire-retardant silicone.

ASSOCIATED PRODUCTS



SPARE KEY
(170001)



4-HOUR FIRE RETARDANT
SILICONE (106164)



* Approximate dimensions.

In accordance with Tricel's normal policy of product development these specifications are subject to change without notice.

Tricel (Gloucester) Ltd. - Fox House, Stonedale Road, Stonehouse, Gloucestershire, GL10 3SA, United Kingdom.

Tel: +44 1453 791616 | Email: constructionsales@tricel.co.uk | www.tricel.co.uk