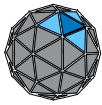
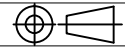
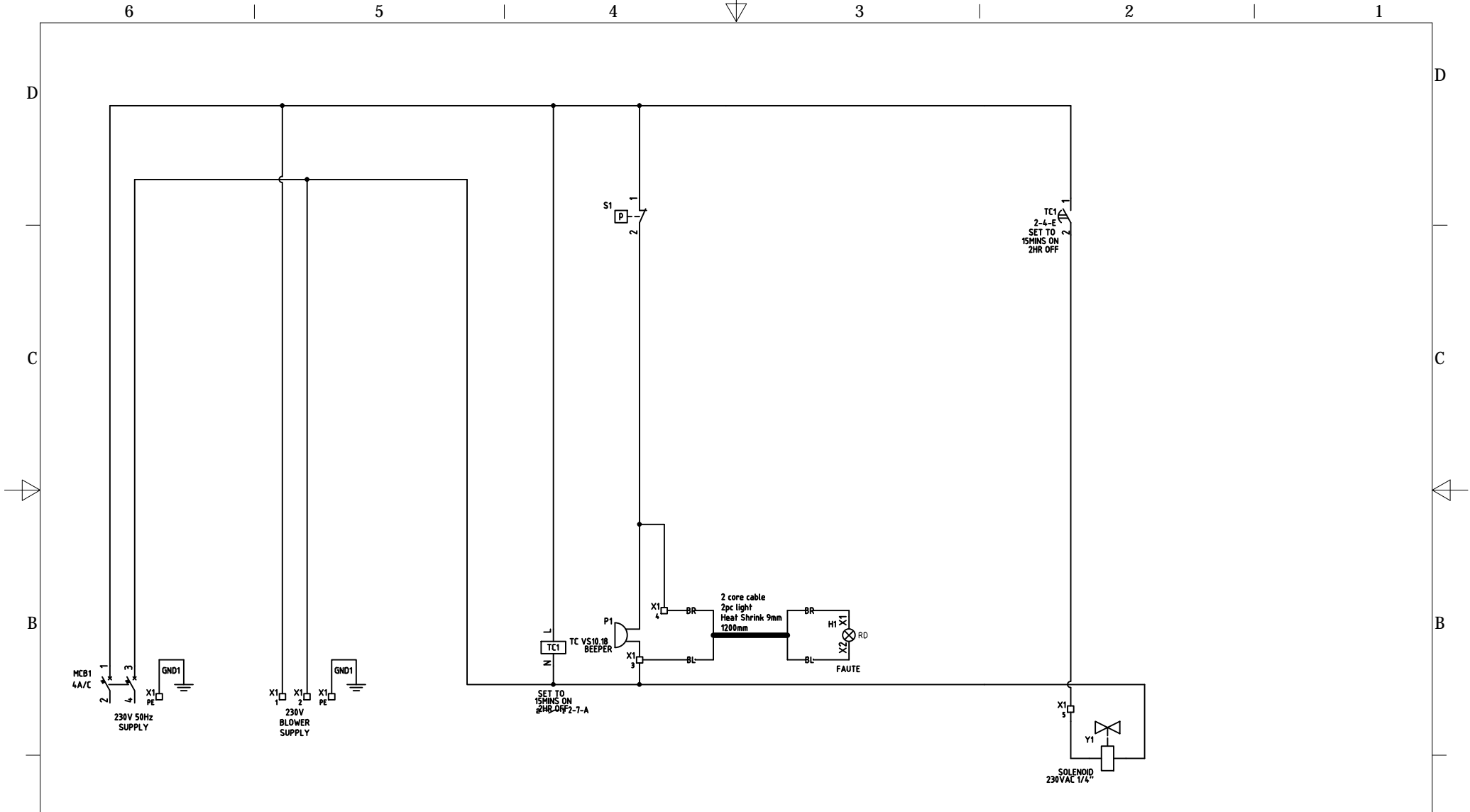
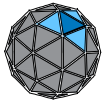
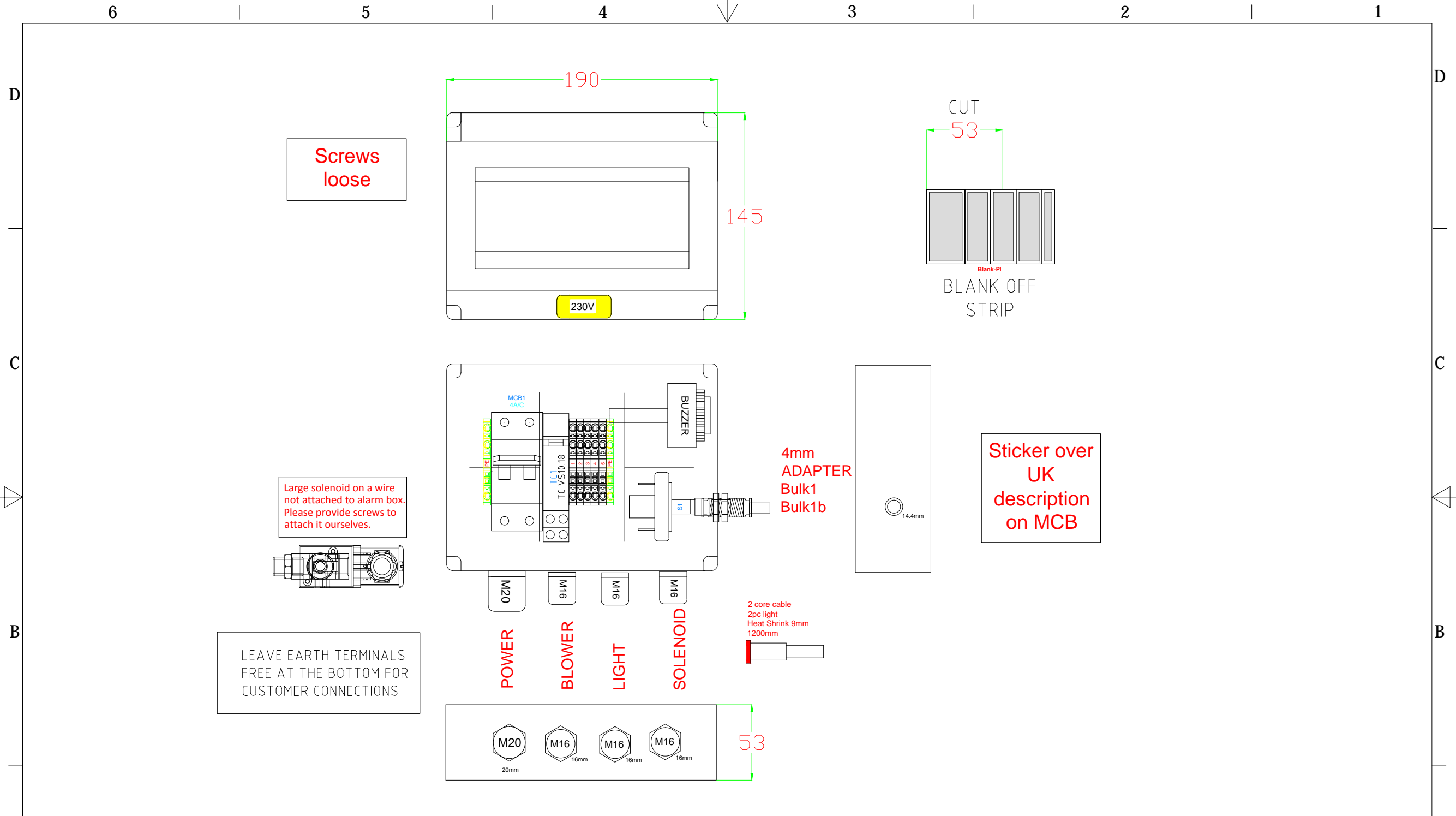



| | | | | | | | | | | | | | | |
|-------------|-------------------|--------------------------|-----------------------------|---|--|-----------------|---|---|--|---|----------|---|---|--|
| 6 | | 5 | | 4 | | 3 | | 2 | | 1 | | | | |
| D | Enclosure Type | GRP | | <p style="text-align: center;">Product: GRAVITY ALARM TYPE B-4Amp</p> <p style="text-align: center;">Description: TRI209113</p> <p style="text-align: center;">Revision: 3</p> | | | | | | Cable Sizing | | D | | |
| | IP | IP54 | | | | | | | | 2.5mm ² | 20 Amps | | C | |
| | Colour | RAL7035 | | | | | | | | 4.0mm ² | 25 Amps | | | |
| | Cable Entry | Bottom | | | | | | | | 6.0mm ² | 32 Amps | | | |
| | Cable Exit | Bottom | | | | | | | | 10.0mm ² | 40 Amps | | | |
| | Cable No. Type | N/A | | | | | | | | 16.0mm ² | 63 Amps | | | |
| | Front Labels Type | Printed Thermal Transfer | | | | | | | | 25.0mm ² | 80 Amps | | | |
| | Cable Type | H05/H07 | | | | | | | | 35.0mm ² | 100 Amps | | | |
| C | | | 50.0mm ² | 125 Amps | | B | | | | | | | | |
| | | | 70.0mm ² | 160 Amps | | | | | | | | | | |
| | | | 95.0mm ² | 200 Amps | | | | | | | | | | |
| | | | 150.0mm ² | 250 Amps | | | | | | | | | | |
| | | | Busbar 2x24mm ² | 300 Amps | | | | | | | | | | |
| | | | Busbar 4x24mm ² | 450 Amps | | | | | | | | | | |
| | | | Busbar 3x32mm ² | 470 Amps | | | | | | | | | | |
| | | | Busbar 5x32mm ² | 600 Amps | | | | | | | | | | |
| | | | Busbar 8x32mm ² | 790 Amps | | | | | | | | | | |
| | | | Busbar 5x50mm ² | 880 Amps | | | | | | | | | | |
| | | | Busbar 8x50mm ² | 1100 Amps | | | | | | | | | | |
| | | | Busbar 10x50mm ² | 1250 Amps | | | | | | | | | | |
| | | | COLOUR CODE: | | | | A | | | | | | | |
| | | | L1 | - Brown | | | | | | | | | | |
| | | | L2 | - Black | | | | | | | | | | |
| | | L3 | - Grey | | | | | | | | | | | |
| | | N | - Light Blue | | | | | | | | | | | |
| | | 110V L | - Red | | | | | | | | | | | |
| | | 110V N | - Yellow | | | | | | | | | | | |
| | | 24V DC | - Dark Blue | | | | | | | | | | | |
| | | 0V DC | - White | | | | | | | | | | | |
| | | 24V AC | - Red | | | | | | | | | | | |
| | | 0V AC | - White | | | | | | | | | | | |
| | | Safety/Sensors | - Orange | | | | | | | | | | | |
| | | Volt Free | - Purple | | | | | | | | | | | |
| DRAWN BY: | | DRAWING DATE: | EFFECTIVE DATE: | PRODUCT NAME: | | PRODUCT NUMBER: | | ACC NUMBER: | |  | | | | |
| AD | | 02/04/2019 | 02/04/2019 | GRAVITY ALARM TYPE B-4Amp | | 209113 | | | | | | | | |
| TOLERANCE: | | MATERIAL: Varies | | SCALE: NOT TO SCALE: | | DRAWING TYPE: | |  | | | | | | |
| UNITS: mm | | DWG NO: TRI209113 | | TANK RIVISION: | | DRAWING REV: 3 | | PAGE SIZE:A4 | | | | | | |
| JOB NUMBER: | | WEIGHT (KG): N/A | | PROJECT NO: | | ECO NO: | | SHEET: 1-5 | | | | | | |
| 6 | | 5 | | 4 | | 3 | | 2 | | 1 | | | | |



| | | | | | | |
|-----------------|-----------------------------|-------------------------------|---|----------------------------------|----------------|--|
| DRAWN BY: AD | DRAWING DATE: 02/04/2019 | EFFECTIVE DATE: 02/04/2019 | PRODUCT NAME: GRAVITY ALARM TYPE B-4Amp | PRODUCT NUMBER: 209113 | ACC NUMBER: |  TRICEL |
| TOLERANCE: | | | MATERIAL: Varies | SCALE: NOT TO SCALE: | DRAWING TYPE: | |
| UNITS: mm | | | DWG NO: TRI209113 | TANK RIVISION: | DRAWING REV: 3 | |
| JOB NUMBER: | | | WEIGHT (KG): N/A | PROJECT NO: | ECO NO: | PAGE SIZE: A4 COUNTRY: |
| | | | | | | SHEET: 2-5 |



| | | | | | | | |
|-----------------|----------------------------|-------------------------------|---|----------------------|----------------------------------|--------------|---|
| DRAWN BY: AD | DRAWING DATE 02/04/2019 | EFFECTIVE DATE: 02/04/2019 | PRODUCT NAME: GRAVITY ALARM TYPE B-4Amp | | PRODUCT NUMBER: 209113 | ACC NUMBER: |  SHEET: 3-5 |
| TOLERANCE: | | | MATERIAL: Varies | SCALE: NOT TO SCALE: | DRAWING TYPE: | | |
| UNITS: mm | | | DWG NO: TRI209113 | TANK RIVISION: | DRAWING REV: 3 | PAGE SIZE:A4 | |
| JOB NUMBER: | | | WEIGHT (KG): N/A | PROJECT NO: | ECO NO: | COUNTRY: | |

6

5

4

3

2

1

D

D

CONNECTION STICKER
INSIDE LID

C

C

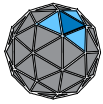
| Borne n° | Descriptif |
|-----------|------------------------------------|
| MALT | ALIMENTATION MALT |
| MDI-2 | ALIMENTATION 230V |
| MDI-4 | ALIMENTATION N |
| 1 | COMPRESSEUR -PHASE |
| 2 | COMPRESSEUR -NEUTRE |
| 3 | VOYANT LUMINEUX ALARME-NEUTRE |
| 4 | VOYANT LUMINEUX ALARME-PHASE |
| 5 | ELECTROVANNE-PHASE |
| 3 | ELECTROVANNE-NEUTRE |
| MALTT-2 | MALT ELECTROVANNEET ET COMPRESSEUR |
| Référence | 209113 |

B

B

A

A

| | | | | | | |
|-----------------|----------------------------|-------------------------------|---|----------------------------------|----------------|--|
| DRAWN BY: AD | DRAWING DATE 02/04/2019 | EFFECTIVE DATE: 02/04/2019 | PRODUCT NAME: GRAVITY ALARM TYPE B-4Amp | PRODUCT NUMBER: 209113 | ACC NUMBER: |  TRICEL SHEET: 4-5 |
| TOLERANCE: | | | MATERIAL: Varies | SCALE: NOT TO SCALE: | DRAWING TYPE: | |
| UNITS: mm | | | DWG NO: TRI209113 | TANK RIVISION: | DRAWING REV: 3 | |
| JOB NUMBER: | | | WEIGHT (KG): N/A | PROJECT NO: | ECO NO: | PAGE SIZE:A4 COUNTRY: |

6

5

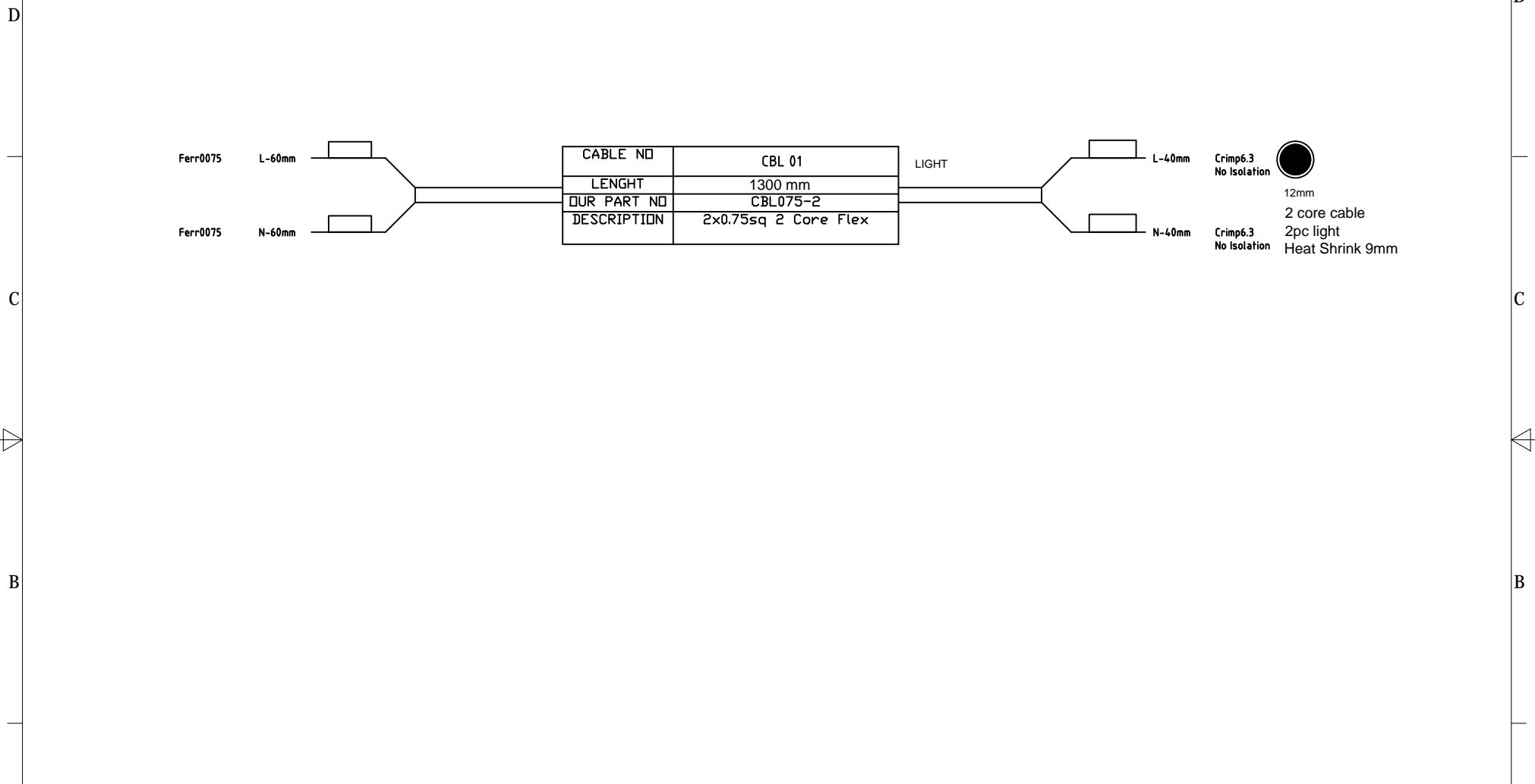
4

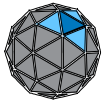
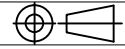
3

2

1

6 | 5 | 4 | 3 | 2 | 1



| | | | | | | | |
|------------|--------------|-----------------|---|----------------------|----------------------------------|---|--|
| DRAWN BY: | DRAWING DATE | EFFECTIVE DATE: | PRODUCT NAME: GRAVITY ALARM TYPE B-4Amp | | PRODUCT NUMBER: 209113 | ACC NUMBER: |  TRICEL SHEET: 5-5 |
| AD | 02/04/2019 | 02/04/2019 | MATERIAL: Varies | SCALE: NOT TO SCALE: | DRAWING TYPE: |  | |
| TOLERANCE: | | | DWG NO: TRI209113 | TANK RIVISION: | DRAWING REV: 3 | PAGE SIZE:A4 | |
| UNITS: mm | | | WEIGHT (KG): N/A | PROJECT NO: | ECO NO: | COUNTRY: | |

6 | 5 | 4 | 3 | 2 | 1