

COMPLIANT WITH IRISH & UK STANDARDS

STOCK CODE: 105097, 105140 & 105141

QUICK OVERVIEW

The MK2 Overbox is a solution to repair used or broken gas and electric meter boxes, there is no requirement to remove the damaged box, nor to employ an electrician or gas engineer to disconnect the meter, the MK2 Overbox is easily fitting into place.

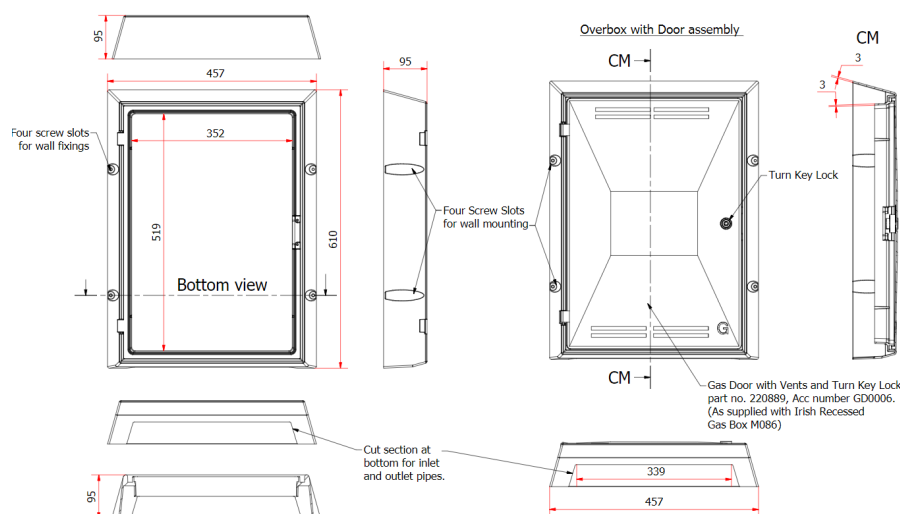
SPECIFICATIONS & KEY FEATURES

- GRP Overbox, repair solution for damaged MK2 recessed Gas & Electric meter boxes
- Meets the requirements of British Standard BS 8499 : 2017 & BS8567:2012
- Constructed from SMC / GRP – Glass Reinforced Polymer.
- Will not corrode, weather resistant.
- Easily cleaned and can be painted.
- Hinges on left. Supplied with rawl plugs, screws and keys.
- Suitable for buildings with red bricks.



DIMENSIONS

610mm high x 457mm wide x 95mm deep.
Internal dimensions = 519mm high x 352mm wide*



* Approximate dimensions.

In accordance with Tricel's normal policy of product development these specifications are subject to change without notice.

Tricel (Killarney) Unlimited Company – Ballyspillane Industrial Estate, Killarney, Co.Kerry, V93 X253, Ireland.
Tel: +353 (0)64 663 2421 | Email: sales@tricel.ie | www.tricel.ie

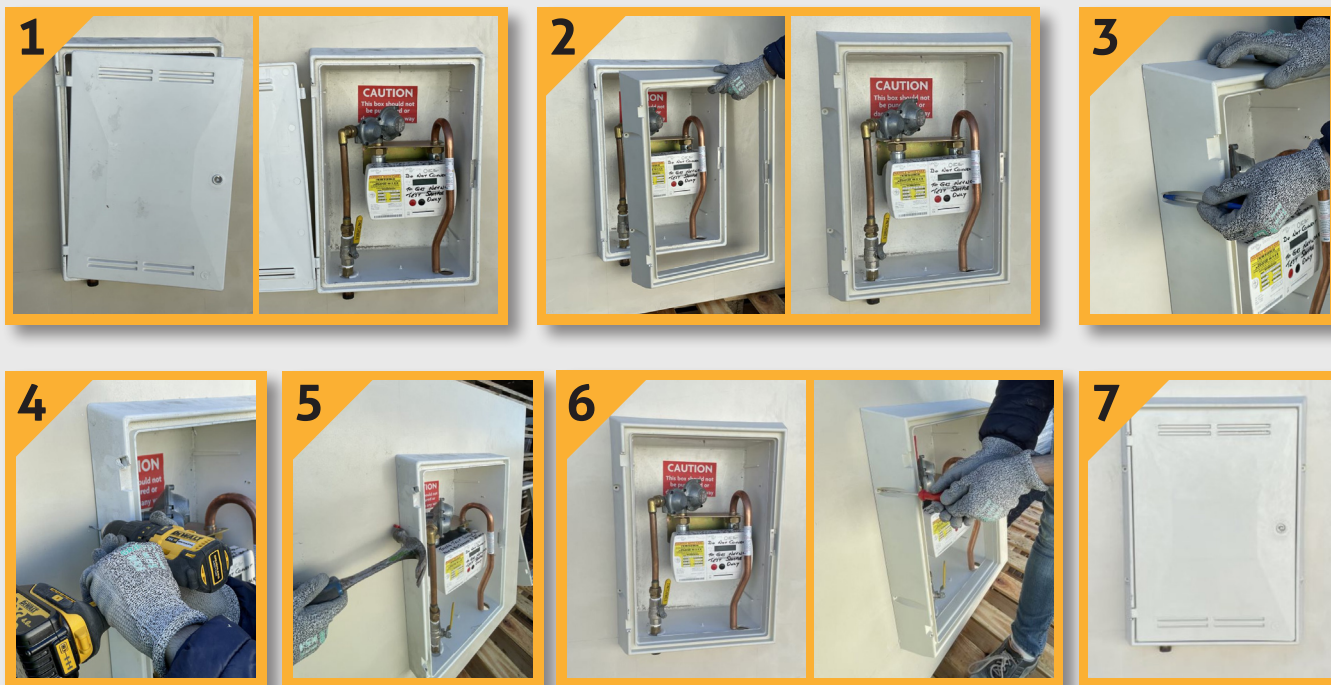
106482-1363716/0-July2023

COMPLIANT WITH IRISH & UK STANDARDS

STOCK CODE: 105097, 105140 & 105141

INSTALLATION PROCEDURE

1. Review damaged Gas Recessed Meter Box to determine damage or electric.
2. Place the Mark 2 Gas Overbox and Door over the architrave.
3. Mark the holes on the wall from the overbox fitting holes.
4. Drill holes using M6 Drill bit at a depth of 30mm.
5. Insert supplied wall plugs into the wall.
6. Align the overbox to the holes drilled on wall, and fix to the wall using supplied M5x 30mmscrews.
7. Close the door and test fit of door. Follow same step for electric installation.



ASSOCIATED PRODUCTS:



SPARE KEY
(170000)

* Approximate dimensions.

In accordance with Tricel's normal policy of product development these specifications are subject to change without notice.

Tricel (Killarney) Unlimited Company – Ballyspillane Industrial Estate, Killarney, Co.Kerry, V93 X253, Ireland.

Tel: +353 (0)64 663 2421 | **Email:** sales@tricel.ie | **www.tricel.ie**

106482-1363716/0-July2023