



# MBD

MeterBoxesDirect.co.uk



Works with  
Tricel and  
Mitras **Mark  
2 Recessed  
Gas Meter  
Boxes**

## GRP OVERBOX

### for Mark 2 Recessed Gas Box

GRP Overbox and Door to suit damaged recessed meter boxes. This GRP Overbox (Door frame kit) comes with a tapered back to fit standard Irish and UK Mark 2 Recessed Gas meter boxes. Suitable for wall mounting.

COMPLIANT TO BS 8499:2017  
STOCK CODE: 105097



**TRICEL**  
GENERATIONS OF INNOVATION

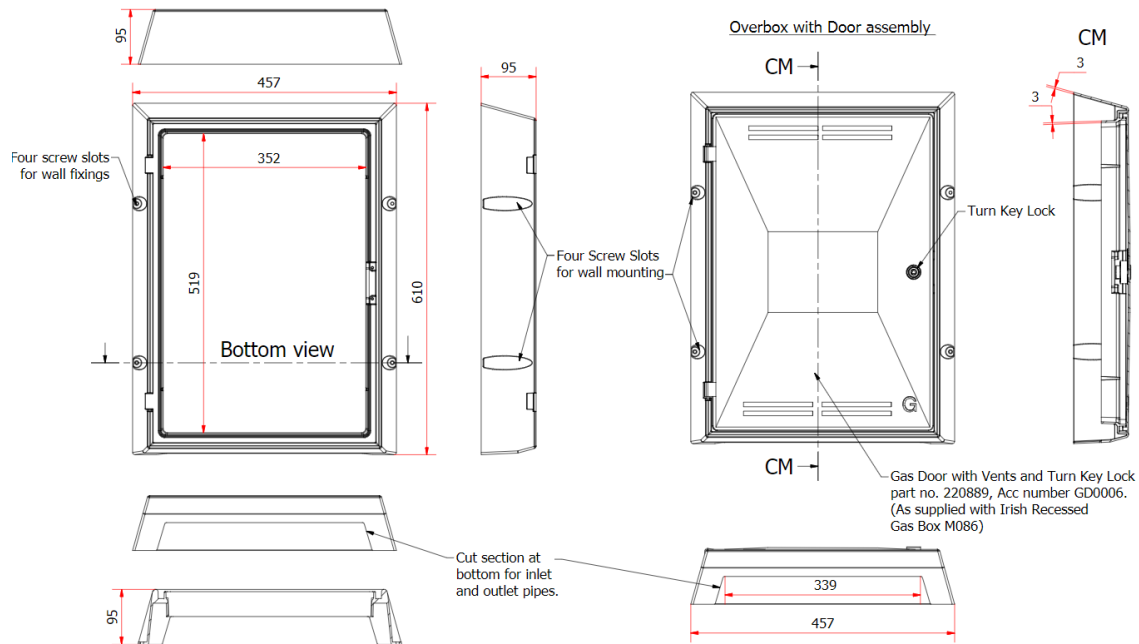
# GRP OVERBOX for Mark 2 Recessed Gas Box.

COMPLIANT TO BS 8499:2017

STOCK CODE: 105097



BUY ONLINE NOW



## DIMENSIONS

610mm high x 457mm wide x 95mm deep

Internal dimensions = 519mm high x 352mm wide\*

## SPECIFICATION AND KEY FEATURES

- GRP Overbox, repair solution for damaged Mark 3 Recessed Gas Meter Boxes.
- Meets the requirements of British Standard BS 8499 : 2017.
- Constructed from SMC / GRP – Glass Reinforced Polymer.
- Will not corrode, weather-resistant.
- Easily cleaned.
- Hinges on left.
- Suitable for buildings with red bricks.

## INSTALLATION

### Step 1:

Ensure that the GRP Overbox you want to fit is correct for the box on the wall. The Damaged Box on the wall should be approximately:

- Height = 595mm to 600mm
- Width = 410mm to 412mm
- Depth (outside of box to wall) = 70mm to 75mm



**TRICEL**  
GENERATIONS OF INNOVATION

\* Approximate dimensions.

In accordance with Tricel's normal policy of product development these specifications are subject to change without notice.

Tricel (Gloucester) Ltd. - Fox House, Stonedale Road, Stonehouse, Gloucestershire, GL10 3SA, United Kingdom.

Tel: 0844 809 4206 | Email: [onlinesales@meterboxesdirect.co.uk](mailto:onlinesales@meterboxesdirect.co.uk) | [www.meterboxesdirect.co.uk](http://www.meterboxesdirect.co.uk)

105097-1420523/0-Feb2024

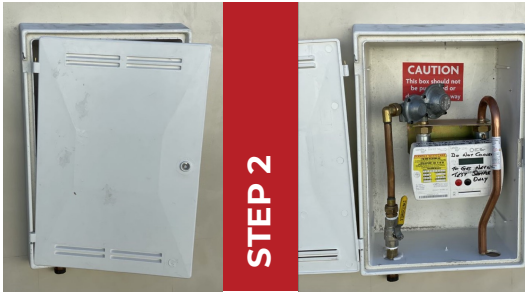
# GRP OVERBOX for Mark 2 Recessed Gas Box.

COMPLIANT TO BS 8499:2017

STOCK CODE: 105097



BUY ONLINE NOW



## Step 2:

Remove the existing door, clean the box architrave and inspect for damage. Any damage (holes or cracks) should be filled using a 4-hour Fire Retardant Silicone to ensure that water does not enter the cabinet.

## Step 3:

After unpacking the GRP Overbox, remove the door. This can be done by depressing the brass insert hinge with a narrow screwdriver.



## Step 4:

Place the GRP Overbox over the damaged box on the wall. Ensure that you have a good fit (incorrect installation of the box on the wall may hinder this).



## Step 5:

Mark the holes on the wall from the overbox fitting holes.



## Step 6:

Drill holes using M6 Drill bit at a depth of 30mm



## Step 7:

Insert supplied wall plugs into the wall.



**TRICEL**  
GENERATIONS OF INNOVATION

\* Approximate dimensions.

In accordance with Tricel's normal policy of product development these specifications are subject to change without notice.

Tricel (Gloucester) Ltd. - Fox House, Stonedale Road, Stonehouse, Gloucestershire, GL10 3SA, United Kingdom.

Tel: 0844 809 4206 | Email: [onlinesales@meterboxesdirect.co.uk](mailto:onlinesales@meterboxesdirect.co.uk) | [www.meterboxesdirect.co.uk](http://www.meterboxesdirect.co.uk)

105097-1420523/0-Feb2024

# GRP OVERBOX for Mark 2 Recessed Gas Box.

COMPLIANT TO BS 8499:2017

STOCK CODE: 105097



BUY ONLINE NOW



### Step 8:

Align the overbox to the holes drilled on wall, and fix to the wall using supplied M5x30mm screws.



### Step 9:

Close the door.

### Step 10:

You may need to seal the architrave to the wall to fill in gaps. Only FR200 4-Hour Fire Retardant Silicone is recommended.

## ASSOCIATED PRODUCTS



Spare key (170000)



4-Hour Fire Retardant  
Silicone (106164)



**TRICEL**  
GENERATIONS OF INNOVATION

\* Approximate dimensions.

In accordance with Tricel's normal policy of product development these specifications are subject to change without notice.

Tricel (Gloucester) Ltd. - Fox House, Stonedale Road, Stonehouse, Gloucestershire, GL10 3SA, United Kingdom.

Tel: 0844 809 4206 | Email: [onsales@meterboxesdirect.co.uk](mailto:onsales@meterboxesdirect.co.uk) | [www.meterboxesdirect.co.uk](http://www.meterboxesdirect.co.uk)

105097-1420523/0-Feb2024