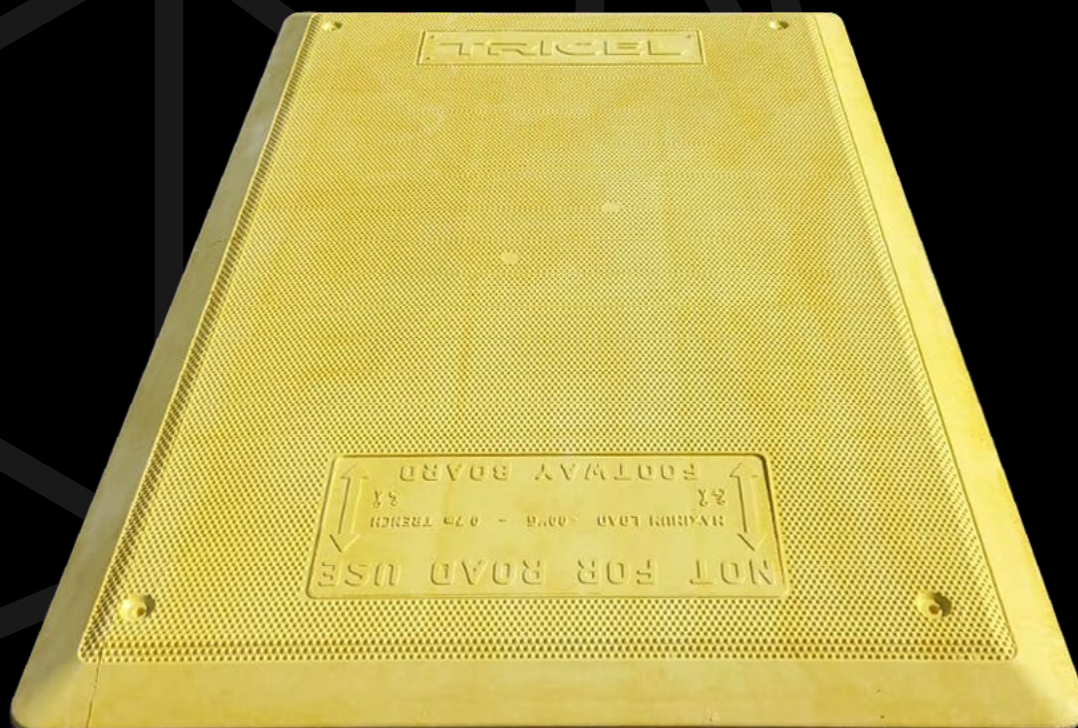


ROAD SAFETY

BY TRICEL



UK'S LEADING
DESIGNER & MANUFACTURER



TRENCH COVER

1220X800MM, 1080X1080MM, 1600X1220MM

FOOTWAY BOARD

STOCK CODE: 1704001, 1701001, 1703001



TRICEL

GENERATIONS OF INNOVATION

STOCK CODE:

1704001 1220x800mm

1701001 1080x1080mm

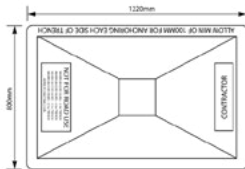
1703001 1600x1220mm

TRENCH COVER

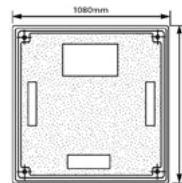
1220X800MM, 1080X1080MM, 1600X1220MM

FOOTWAY BOARD

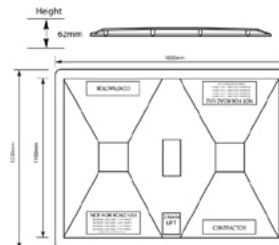
Provides safe access and passage over and around site excavations for pedestrian and light vehicle traffic.



TRENCH COVER
1220X800MM
174001



TRENCH COVER
1080X1080MM
1701001



TRENCH COVER
1600X1220MM
1703001

ROAD SAFETY

BY TRICEL



UK'S LEADING
DESIGNER & MANUFACTURER



DIMENSIONS

- 1220mm x 800mm: 13.5kg
- 1080mm x 1080mm: 17kg
- 1600mm x 1220mm: 27kg

KEY FEATURES

- Designed for covering holes and trenches during maintenance, construction and repair projects.
- Highest rated anti-slip in UK & complies HSE slip resistance
- Shock resistant
- Max load of 3 tonne vehicle (see load ratings below)
- Fully compliant with current UK & European Legislation
- Manufactured from SMC glass reinforced polymer, making it lightweight and durable
- High strength to weight ratio
- 3mm non-trip leading edge

SPECIFICATIONS

Load Rating:

- 1220mm x 800mm: 2 tonne vehicle loading over a 700mm trench
- 1080mm x 1080mm: 2 tonne vehicle loading over a 500mm trench
- 1600mm x 1220mm: 3 tonne vehicle loading over a 500mm trench
- Overhang for Trench minimum 150mm on unedged and 180mm on edged boards

Colours:

- Standard yellow. Some other colours are available to minimum orders
- Can be manufactured with permanent corporate logos

* Approximate dimensions.

In accordance with Tricel's normal policy of product development these specifications are subject to change without notice.

Tricel (Gloucester) Ltd. - Fox House, Stonedale Road, Stonehouse, Gloucestershire, GL10 3SA, United Kingdom.

Tel: +44 1453 791616 | Email: constructionsales@tricel.co.uk | www.tricel.co.uk

STOCK CODE:

1704001 1220x800mm

1701001 1080x1080mm

1703001 1600x1220mm

TRENCH COVER

1220X800MM, 1080X1080MM, 1600X1220MM

FOOTWAY BOARD

ROAD SAFETY

BY TRICEL



UK'S LEADING
DESIGNER & MANUFACTURER



SAFETY

Approved by local authorities and major utility companies.

- Department for Transport compliant (Safety at Street Works and Road Works)
- Department for Transport compliant (Practical guide for Street Works)
- DETR compliant (Best Practice in Street Works and Highway Works)
- Complies to and exceeds the directives and specifications in the latest Street Works regulations and Directive 2017 relating to Ramps, Trench Covers and Road Plates
- Complies to and exceeds T/SP/E42 National Grid specification for Ramps, Trench Covers and Road Plates



TENCH COVER
INSITU

* Approximate dimensions.

In accordance with Tricel's normal policy of product development these specifications are subject to change without notice.

Tricel (Gloucester) Ltd. - Fox House, Stonedale Road, Stonehouse, Gloucestershire, GL10 3SA, United Kingdom.

Tel: +44 1453 791616 | Email: constructionsales@tricel.co.uk | www.tricel.co.uk